



water for people

RURAL WASH FACILITY FOR LATIN AMERICA

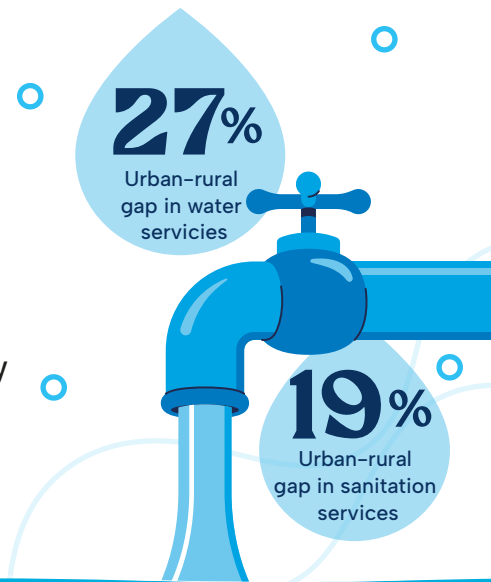
A catalyst for innovation and sustainable change



“Rural areas must be prioritized in acceleration processes if we want to reach SDG 6.”

CHALLENGES TO WASH SERVICE DELIVERY IN RURAL LATIN AMERICA: AN ISSUE OF INEQUITIES

Significant differences in water and sanitation service levels between urban and rural communities in Latin America demonstrate the existence of vast inequities. The urban-rural gap in safely managed water services is roughly 27%, while the gap in basic sanitation is about 19%. Progress is challenging. Rural communities are disproportionately affected by low population density and lack of socioeconomic activity increase rates of poverty. Poor physical infrastructure like roads complicate access to communities. Communities are more vulnerable to the effects of climate change.



AN INNOVATIVE AND TRANSFORMATIVE SOLUTION: RURAL WASH FACILITY

“The greatest challenges require the most innovative ideas.”

The Rural WASH Facility is the on-ramp to a high-speed expressway of knowledge and innovation that will accelerate the connections of rural dispersed communities in Latin America to sustainable water and sanitation systems that ensure *no one is left behind*

This non-refundable competitive challenge fund that aims to stimulate creativity, promote collaboration, and deliver sustainable and measurable results, is comprised of three components:

- 1 Financing initiatives
- 2 Technical assistance
- 3 Promoting learning



The facility focuses on initiatives at the national, subnational, and select municipalities in **Bolivia, Guatemala, Honduras, and Peru** that are planned for implementation between 2026 and 2030.

HOW WILL THE RURAL WASH FACILITY WORK?

The Rural WASH Facility is an annual competitive process that encourages the development and submission of proposals with innovative solutions to address the root and systemic causes to rural WASH service delivery in Latin America, including basic access, coverage, and sustainability.

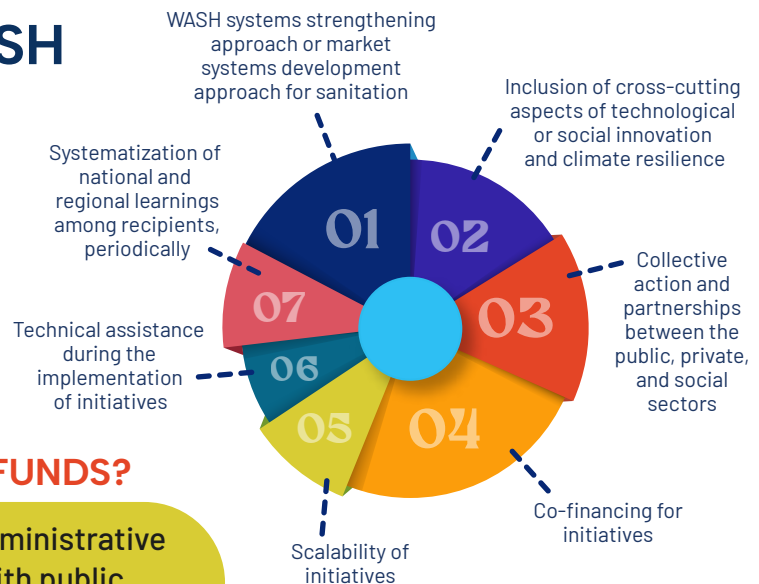
WHO WILL BE ABLE TO ACCESS THESE FUNDS?

Public entities at the local, subnational or national administrative levels in the four participating countries in alliance with public sector, civil society, or academic institutions.

A CATALYST FOR INNOVATION AND SUSTAINABLE CHANGE

Water For People is leading the Rural WASH Facility. Drawing on lessons learned from our work in 20 districts in Latin America, the fund will provide the catalyst to invest in the most innovative solutions that address major challenges to water and sanitation service delivery in rural dispersed communities. Our experience is far-reaching:

- ✓ **15 years of experience** in nine countries globally, four of them in Latin America, successfully implementing the WASH system strengthening model at local, sub national, and national levels.
- ✓ **Experts in sustainable WASH** in the most remote and dispersed rural areas.
- ✓ **Experts on market systems** development.
- ✓ **Solid experience in financial management** and accountability in ranges of tens of millions of dollars.



WHAT FUTURE IMPACT DO WE EXPECT?

-  **Improved family health**
Reduces the incidence of waterborne diseases.
-  **Boosts family development**
When time and resources are freed up, people can invest in education and income-generating activities, especially women and children.
-  **Strengthens the local economy**
By integrating WASH into the local value chain, productivity in the sector increases.
-  **Sustainability and resilience**
Promotes the development of sustainable and resilient WASH infrastructures and services.

IMPACT ON THE WASH SECTOR



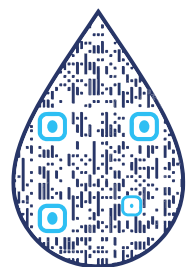
Provides innovative, resilient, and sustainable solutions.



Strengthens actor capacities.



Promotes international and cross-regional adaptation through enhanced learning.



SCAN ME
To learn more about the RURAL WASH FACILITY